

# Product Data Sheet

hm2.0 Male connector, type L,  
Part No. 243-51000

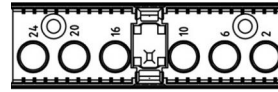
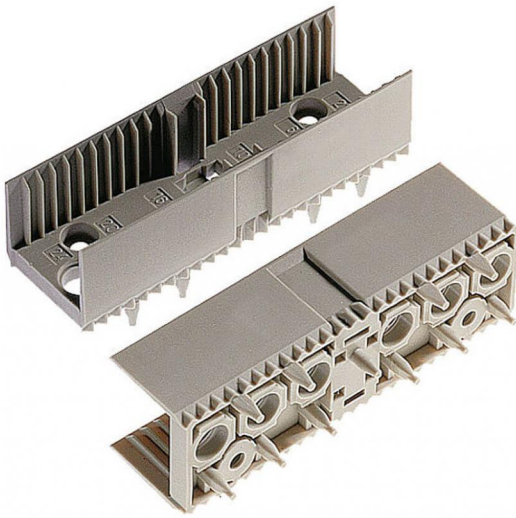


Illustration similar



Perpendicular



Press-fit



Power

- for PCB  $\geq 1.44$  mm
- tested according to IEC 61076-4-101



» to product on [www.ept.de](http://www.ept.de)



» to product group hm 2.0

# Product Data Sheet

hm2.0 Male connector, type L,  
Part No. 243-51000



---

## Technical Specifications

### Basics

---

Specification	IEC 61076-4-101
Operating Temperature Range	-55°C to +125°C

### Material

---

Insulator Material	PBT glass filled, UL 94 V-0
--------------------	-----------------------------

### Approval / Compliance

---

UL file	E130314
Environment	RoHS compliant

# Product Data Sheet

hm2.0 Male connector, type L,  
Part No. 243-51000

---



## Accessories

- » hm2.0 High power contact for type L, M and N  
Part Number 915-61011
- » hm2.0 Coding key male connector  
Part Number 243-8031
- » hm2.0 Coding key male connector  
Part Number 243-8014

## Drawings

Component data for this product you can request through [sales@ept.de](mailto:sales@ept.de)