

Product description

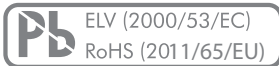


www.atd-elektronik.cz

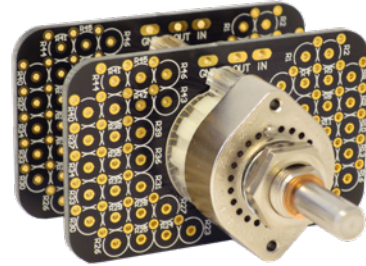
MAIN FEATURES

47 POSITIONS SHUNT TYPE AUDIO ATTENUATOR FOR LARGE SIZE THT RESISTORS

- › 47 positions with selectable end stops
- › Low profile: 36 mm height
- › Up to 2 channels
- › For resistors with up to 5 mm body diameter
- › Exceptional sonic performance with precise switch feel
- › Low-bounce contact system with 3 µm gold plating
- › Free Excel resistor calculator tool available



SERIES A47 JUMBO two-channel version



PRODUCT VARIETY

- One or two channels available

POSSIBLE CUSTOMIZATIONS

- Shafts, concentric construction

TYPICAL APPLICATIONS

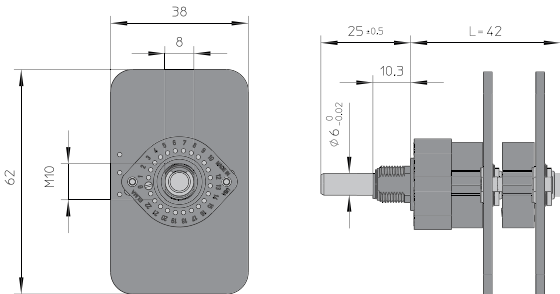
- Mixing desks and outboard studio equipment
- Home audio and home theater

DESCRIPTION

The A47 JUMBO audio switch series incorporates a PCB based switch contact system that is specifically designed to meet audiophile requirements for superb sonic performance. These shunt type attenuators provide 47 positions and are available in one or two channel versions, while offering switch turning torques of 1.5, 2.5 and 5 Ncm. The PCB is designed to accommodate a maximum resistor dimension of 5 mm body diameter by 12 mm body length. The A47 JUMBO series feature Elma's hallmark indexing feel for superior tactile feedback.

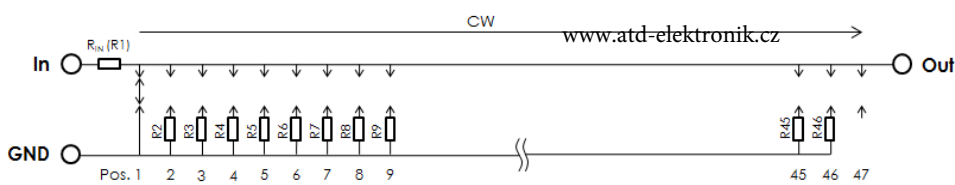
Dimensions, pin assignment and circuit diagram

SWITCH DESIGN

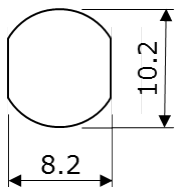


www.atd-elektronik.cz

PIN ASSIGNMENT AND CIRCUIT DIAGRAM

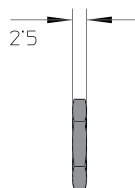
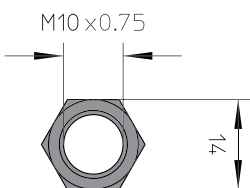


FRONT PANEL CUT OUT

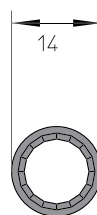


NUT

HEX NUT



LOCK WASHER



Dimensions in mm
Tolerances according to DIN ISO 2768-1 (m), unless otherwise specified



www.atd-elektronik.cz

Ordering information

ORDERING CODE

A47	-	JUM	-	-
-----	---	-----	---	---

SWITCHING TORQUE	
A	1.5 Ncm
B	2.5 Ncm
C	5 Ncm

NUMBER OF WAFERS	
1	1 wafer
2	2 wafers

PACKAGING

Single piece packed, lock washer and two nuts are included

ACCESSORIES AND SPARE PARTS

Spare nut:

Part number 5622-16

Stop screws:

10 pieces / bag, part number 4124-21

Specifications

GENERAL

Indexing resolution:	47 positions (7.5° indexing 345° total switch travel)
Switching torque:	1.5, 2.5 or 5 Ncm (± 30% over temperature range and life)
Rotational life:	25'000 cycles (over temperature range, at 120 RPM)
Contact system:	Low-bounce wiper with 3 µm hard gold plated PCB
Resistors dimension:	Ø 5 x 12 mm max. body size, Ø 1 mm max. lead diameter
Taper:	Use free calculator (excel) to determine resistor values according to desired tapers

©Copyright 2018 by Elma Electronic AG, CH-8620 Wetzikon. Subject to technical modifications, all data supplied without liability.

Please contact our sales team for more details.

China: +86 21 5866 5908
France: +33 388 56 72 50

Germany: +49 7231 97 34 0
Israel: +972 3 930 50 25

Singapore: +65 6479 8552
Switzerland: +41 44 933 41 11

United Kingdom: +44 1234 838 822
United States: +1 510 656 3400