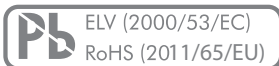


Product description

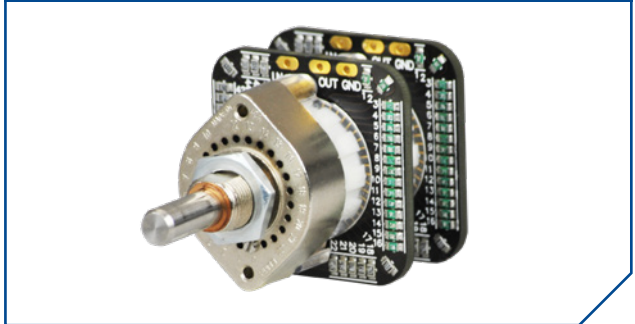
MAIN FEATURES

HIGH RESOLUTION SERIES AUDIO ATTENUATOR WITH 47 POSITIONS

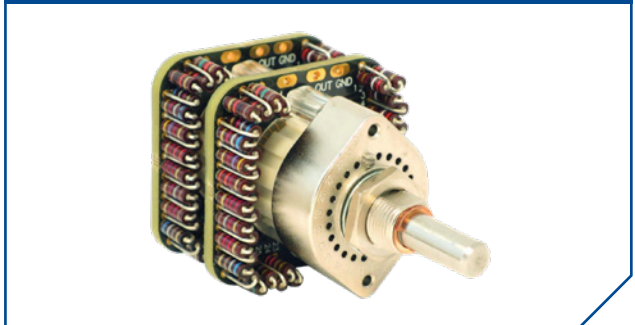
- › 47 positions with selectable end stops
- › Low profile: 36 x 36 mm
- › Up to 6 channels
- › Available with pre-populated thin-film SMT resistors or non-populated THT versions
- › 600 ohm, 10 k , 25 k, 50 k or 100 k ohm standard input impedances
- › Exceptional sonic performance with precise switch feel
- › Low-bounce contact system with 3 µm gold plating
- › Free Excel resistor calculator tool available



SERIES A47 two-channel SMT version



SERIES A47 two-channel THT version*



PRODUCT VARIETY

- Two-channel SMT version
- Two-channel THT version (supplied non-populated)

POSSIBLE CUSTOMIZATIONS

- Shafts, concentric construction

DESCRIPTION

The A47 audio switch series incorporates a PCB based switch contact system that is specifically designed to meet audioophile requirements for superb sonic performance. These series attenuators provide 47 positions and are available from 1 to 6 channels. Switch torques of 1.5, 2.5 and 5 Ncm are available standard, populated with low-noise, high precision SMT resistors (standard input impedances are 600 ohm, 10 k, 25 k, 50 k or 100 k ohm) or non-populated THT versions (can be populated by the customer).

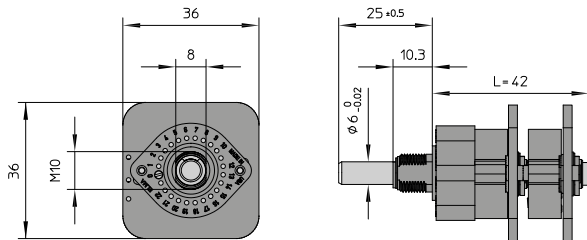
The A47 series feature Elma's hallmark indexing feel for superior tactile feedback.

TYPICAL APPLICATIONS

- Mixing desks and outboard studio equipment
- Home audio and home theater

Dimensions, pin assignment and circuit diagram

SWITCH DESIGN

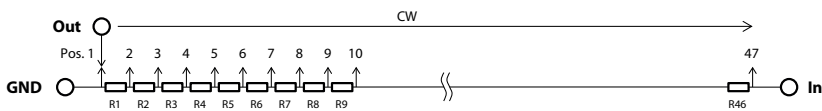


- 1 wafer L = 24.5
- 2 wafers L = 42.0
- 3 wafers L = 59.5
- 4 wafers L = 77.0
- 5 wafers L = 94.5
- 6 wafers L = 112.0

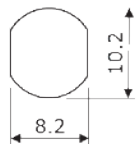


www.atd-elektronik.cz

PIN ASSIGNMENT AND CIRCUIT DIAGRAM

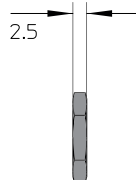
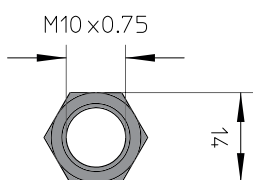


FRONT PANEL CUT OUT

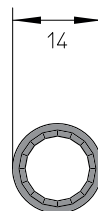


NUT

HEX NUT



LOCK WASHER



Dimensions in mm
Tolerances according to DIN ISO 2768-1 (m), unless otherwise specified



Ordering information

ORDERING CODE

A47	-	SER	-	-	-	---
-----	---	-----	---	---	---	-----

SWITCHING TORQUE

- A** 1.5 Ncm (not recommended for > 2 wafers)
- B** 2.5 Ncm (not recommended for > 4 wafers)
- C** 5 Ncm

NUMBER OF WAFERS

- X** Number of wafers (max. 6)

FUNCTION (per wafer)

- THT** THT, non-populated
- 0k6** 600 ohm impedance
- 010** 10 k ohm impedance
- 025** 25 k ohm impedance
- 050** 50 k ohm impedance
- 100** 100 k ohm impedance

PACKAGING

Single piece packed, lock washer and two nuts are included

ACCESSORIES AND SPARE PARTS

Spare nut:

Part number 5622-16

Stop screws:

10 pieces / bag, part number 4124-21

SPECIFICATIONS

GENERAL

Indexing resolution:	47 positions (7.5° indexing 345° total switch travel)
Switching torque:	1.5, 2.5 or 5 Ncm (±30 % over temperature range and life)
Rotational life:	25'000 cycles (over temperature range, at 120 RPM)
Contact system:	Low-bounce wiper with 3 µm hard gold plated PCB
SMT resistors:	0805 package, thin-film, ±0.1 %, TCR; ±25 ppm / °C
THT resistors:	Non-populated, max. package size, $\text{Æ}2.8 \times 10 \text{ mm}$ ($\text{Æ}0.6 \text{ mm}$ wire)
Input impedance:	10 k, 25 k, 50 k, 100 k or 600 ohm

DB ATTENUATION (SERIES TYPE ATTENUATORS)

SWITCH POSITION	1	2	3	4	5	6	7	8	9	10	...	47
Attenuation (dB)	Off	-72	-69	-66	-64	-62	-60	-58.5	-57	-55.5	...	0
Step size (dB)		3	3	2	2	2	1.5	1.5	1.5	...	1.5	...

©Copyright 2018 by Elma Electronic AG, CH-8620 Wetzikon. Subject to technical modifications, all data supplied without liability.

Please contact our sales team for more details.

China: +86 21 5866 5908
France: +33 388 56 72 50

Germany: +49 7231 97 34 0
Israel: +972 3 930 50 25

Singapore: +65 6479 8552
Switzerland: +41 44 933 41 11

United Kingdom: +44 1234 838 822
United States: +1 510 656 3400