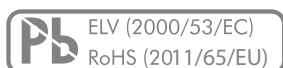


Product description

MAIN FEATURES

- > Precise quality knobs
- > Secure collet mounting
- > Wide variety
- > Lots of accessories
- > Customized colors on request



PRODUCT VARIETY

- Knob size 9 to 45 mm
- Shaft diameter: 2 mm to 1/4"
- Glossy or matt surface
- Knob color black or gray
- Various cap colors
- With or without line
- Various accessories

POSSIBLE CUSTOMIZATIONS

- Color
- Shaft diameter

OVERVIEW

| SHAFT DIAMETER Ø | KNOBS SIZE | | | | | | |
|------------------|------------|----------|-----------|----------|----------|----------|----------|
| | Ø 9 mm | Ø 10 mm | Ø 14.5 mm | Ø 21 mm | Ø 28 mm | Ø 36 mm | Ø 45 mm |
| 2 mm | x | x | | | | | |
| 3 mm | x | x | x | | | | |
| 4 mm | | x | x | x | | | |
| 6 mm | | | x | x | x | x | x |
| 1/8" | x | x | x | | | | |
| 1/4" | | | x | x | x | x | x |
| Wing knob | | x | x | x | x | | |
| Crank knob | | | | | | | x |
| SEE | PAGE <?> | PAGE <?> | PAGE <?> | PAGE <?> | PAGE <?> | PAGE <?> | PAGE <?> |

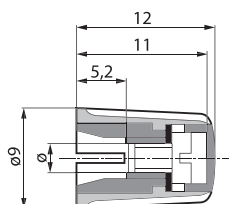
Knob size vs. shaft diameter, wing and crank style

Dimensions and ordering information



www.atd-elektronik.cz

SHAPE, DIMENSION AND PART NUMBER

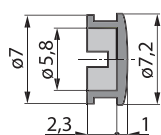
KNOB SIZE: Ø 9 MM





KNOB

| TYPE | SHAFT DIAMETER | GRAY | | BLACK | |
|---|----------------|----------|----------|----------|----------|
| | | MATT | GLOSSY | MATT | GLOSSY |
| Without line  | 2 | 020-1015 | 020-1010 | 020-1025 | 020-1020 |
| | 3 | 020-1115 | 020-1110 | 020-1125 | 020-1120 |
| | 1/8" | 020-1215 | 020-1210 | 020-1225 | 020-1220 |
| With line  | 2 | 021-1015 | 021-1010 | 021-1025 | 021-1020 |
| | 3 | 021-1115 | 021-1110 | 021-1125 | 021-1120 |
| | 1/8" | 021-1215 | 021-1210 | 021-1225 | 021-1220 |

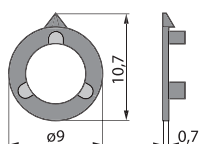
Packaging size: 100 pieces



CAP

| TYPE | SURFACE | GRAY | BLACK | RED | BLUE | YELLOW | GREEN |
|---|---------|----------|----------|----------|----------|----------|----------|
| Without line  | Matt | 040-1015 | 040-1025 | 040-1035 | 040-1045 | 040-1055 | 040-1065 |
| | Glossy | 040-1010 | 040-1020 | 040-1030 | 040-1040 | 040-1050 | 040-1060 |
| With line  | Matt | 040-1615 | 040-1625 | 040-1635 | 040-1645 | 040-1655 | 040-1665 |
| | Glossy | 040-1610 | 040-1620 | 040-1630 | 040-1640 | 040-1650 | 040-1660 |

Packaging size: 100 pieces



POINTER

| SURFACE | GRAY | BLACK | RED | BLUE | YELLOW | GREEN |
|---------|----------|----------|----------|----------|----------|----------|
| Matt | 041-1015 | 041-1025 | 041-1035 | 041-1045 | 041-1055 | 041-1065 |
| Glossy | 041-1010 | 041-1020 | 041-1030 | 041-1040 | 041-1050 | 041-1060 |

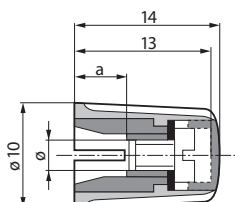
Packaging size: 100 pieces

Dimensions and ordering information



www.atd-elektronik.cz

SHAPE, DIMENSION AND PART NUMBER

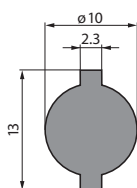
KNOB SIZE: Ø 10 MM




KNOB

| TYPE | α | SHAFT DIAMETER | GRAY | | BLACK | |
|---|-----|----------------|----------|----------|----------|----------|
| | | | MATT | GLOSSY | MATT | GLOSSY |
| Without line  | 4.5 | 2 | 020-2015 | 020-2010 | 020-2025 | 020-2020 |
| | 5.2 | 3 | 020-2115 | 020-2110 | 020-2125 | 020-2120 |
| | 5.2 | 1/8" | 020-2215 | 020-2210 | 020-2225 | 020-2220 |
| | 5.2 | 4 | 020-2315 | 020-2310 | 020-2325 | 020-2320 |
| With line  | 4.5 | 2 | 021-2015 | 021-2010 | 021-2025 | 021-2020 |
| | 5.2 | 3 | 021-2115 | 021-2110 | 021-2125 | 021-2120 |
| | 5.2 | 1/8" | 021-2215 | 021-2210 | 021-2225 | 021-2220 |
| | 5.2 | 4 | 021-2315 | 021-2310 | 021-2325 | 021-2320 |

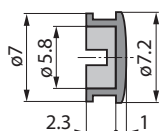
Packaging size: 100 pieces





WING KNOB

| TYPE | α | SHAFT DIAMETER | GRAY | | BLACK | |
|--|-----|----------------|----------|----------|----------|----------|
| | | | MATT | GLOSSY | MATT | GLOSSY |
| With line  | 4.5 | 2 | 023-2015 | 023-2010 | 023-2025 | 023-2020 |
| | 5.2 | 3 | 023-2115 | 023-2110 | 023-2125 | 023-2120 |
| | 5.2 | 1/8" | 023-2215 | 023-2210 | 023-2225 | 023-2220 |
| | 5.2 | 4 | 023-2315 | 023-2310 | 023-2325 | 023-2320 |

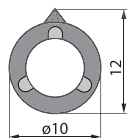
Packaging size: 100 pieces



CAP

| TYPE | SURFACE | GRAY | BLACK | RED | BLUE | YELLOW | GREEN |
|---|---------|----------|----------|----------|----------|----------|----------|
| Without line  | Matt | 040-1015 | 040-1025 | 040-1035 | 040-1045 | 040-1055 | 040-1065 |
| | Glossy | 040-1010 | 040-1020 | 040-1030 | 040-1040 | 040-1050 | 040-1060 |
| With line  | Matt | 040-1615 | 040-1625 | 040-1635 | 040-1645 | 040-1655 | 040-1665 |
| | Glossy | 040-1610 | 040-1620 | 040-1630 | 040-1640 | 040-1650 | 040-1660 |

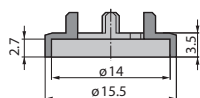
Packaging size: 100 pieces





POINTER

| SURFACE | GRAY | BLACK | RED | BLUE | YELLOW | GREEN |
|---------|----------|----------|----------|----------|----------|----------|
| Matt | 041-2015 | 041-2025 | 041-2035 | 041-2045 | 041-2055 | 041-2065 |
| Glossy | 041-2010 | 041-2020 | 041-2030 | 041-2040 | 041-2050 | 041-2060 |

Packaging size: 100 pieces



NUT COVER

| TYPE | SURFACE | GRAY | BLACK |
|---|---------|----------|----------|
| Without line  | Matt | 044-2015 | 044-2025 |
| | Glossy | 044-2010 | 044-2020 |
| With line  | Matt | 044-2115 | 044-2125 |
| | Glossy | 044-2110 | 044-2120 |

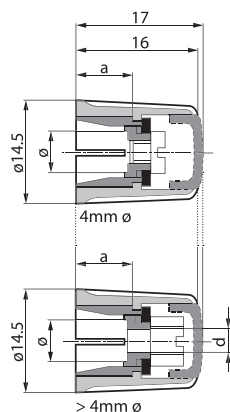
Packaging size: 100 pieces

www.atd-elektronik.cz

Dimensions and ordering information

SHAPE, DIMENSION AND PART NUMBER

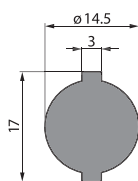
KNOB SIZE: Ø 14.5 MM



KNOB

| TYPE | a | d | SHAFT DIAMETER | GRAY | | BLACK | |
|--------------|-----|-----|----------------|----------|----------|----------|----------|
| | | | | MATT | GLOSSY | MATT | GLOSSY |
| Without line | 5.2 | - | 3 | 020-3115 | 020-3110 | 020-3125 | 020-3120 |
| | 5.2 | - | 1/8" | 020-3215 | 020-3210 | 020-3225 | 020-3220 |
| | 5.2 | - | 4 | 020-3315 | 020-3310 | 020-3325 | 020-3320 |
| | 7.0 | 3.2 | 6 | 020-3415 | 020-3410 | 020-3425 | 020-3420 |
| | 7.0 | 3.2 | 1/4" | 020-3515 | 020-3510 | 020-3525 | 020-3520 |
| With line | 5.2 | - | 3 | 021-3115 | 021-3110 | 021-3125 | 021-3120 |
| | 5.2 | - | 1/8" | 021-3215 | 021-3210 | 021-3225 | 021-3220 |
| | 5.2 | - | 4 | 021-3315 | 021-3310 | 021-3325 | 021-3320 |
| | 7.0 | 3.2 | 6 | 021-3415 | 021-3410 | 021-3425 | 021-3420 |
| | 7.0 | 3.2 | 1/4" | 021-3515 | 021-3510 | 021-3525 | 021-3520 |

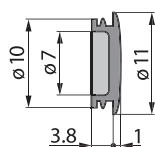
Packaging size: 100 pieces



WING KNOB

| TYPE | a | d | SHAFT DIAMETER | GRAY | | BLACK | |
|-----------|-----|-----|----------------|----------|----------|----------|----------|
| | | | | MATT | GLOSSY | MATT | GLOSSY |
| With line | 5.2 | - | 3 | 023-3115 | 023-3110 | 023-3125 | 023-3120 |
| | 5.2 | - | 1/8" | 023-3215 | 023-3210 | 023-3225 | 023-3220 |
| | 5.2 | - | 4 | 023-3315 | 023-3310 | 023-3325 | 023-3320 |
| | 7.0 | 3.2 | 6 | 023-3415 | 023-3410 | 023-3425 | 023-3420 |
| | 7.0 | 3.2 | 1/4" | 023-3515 | 023-3510 | 023-3525 | 023-3520 |

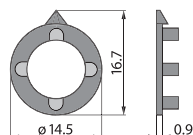
Packaging size: 100 pieces



CAP

| TYPE | SURFACE | GRAY | BLACK | RED | BLUE | YELLOW | GREEN |
|--------------|---------|----------|----------|----------|----------|----------|----------|
| Without line | Matt | 040-3015 | 040-3025 | 040-3035 | 040-3045 | 040-3055 | 040-3065 |
| | Glossy | 040-3010 | 040-3020 | 040-3030 | 040-3040 | 040-3050 | 040-3060 |
| With line | Matt | 040-3615 | 040-3625 | 040-3635 | 040-3645 | 040-3655 | 040-3665 |
| | Glossy | 040-3610 | 040-3620 | 040-3630 | 040-3640 | 040-3650 | 040-3660 |

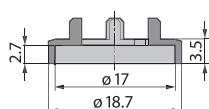
Packaging size: 100 pieces



POINTER

| SURFACE | GRAY | BLACK | RED | BLUE | YELLOW | GREEN |
|---------|----------|----------|----------|----------|----------|----------|
| Matt | 041-3015 | 041-3025 | 041-3035 | 041-3045 | 041-3055 | 041-3065 |
| Glossy | 041-3010 | 041-3020 | 041-3030 | 041-3040 | 041-3050 | 041-3060 |

Packaging size: 100 pieces



NUT COVER

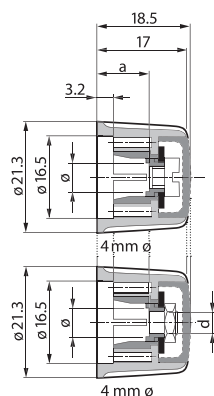
| TYPE | SURFACE | GRAY | BLACK | ROT |
|--------------------|---------|----------|----------|----------|
| Without line | Matt | 044-3015 | 044-3025 | 044-3035 |
| | Glossy | 044-3010 | 044-3020 | 044-3030 |
| With line | Matt | 044-3115 | 044-3125 | 044-3135 |
| | Glossy | 044-3110 | 044-3120 | 044-3130 |
| Only for wing knob | Matt | 044-3215 | 044-3225 | 044-3235 |
| | Glossy | 044-3210 | 044-3220 | 044-3230 |

Packaging size: 100 pieces



Dimensions and ordering information

SHAPE, DIMENSION AND PART NUMBER

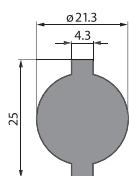
KNOB SIZE: Ø 21 MM




KNOB

| TYPE | a | d | SHAFT DIAMETER | GRAY | | BLACK | |
|---|-----|------|----------------|----------|----------|----------|----------|
| | | | | MATT | GLOSSY | MATT | GLOSSY |
| Without line | 8.3 | - | 4 | 020-4315 | 020-4310 | 020-4325 | 020-4320 |
|  | 10 | 4.05 | 6 | 020-4415 | 020-4410 | 020-4425 | 020-4420 |
| | 10 | 3.2 | 1/4" | 020-4515 | 020-4510 | 020-4525 | 020-4520 |
| With line | 8.3 | - | 4 | 021-4315 | 021-4310 | 021-4325 | 021-4320 |
|  | 10 | 4.05 | 6 | 021-4415 | 021-4410 | 021-4425 | 021-4420 |
| | 10 | 3.2 | 1/4" | 021-4515 | 021-4510 | 021-4525 | 021-4520 |

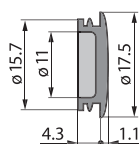
Packaging size: 100 pieces



WING KNOB

| TYPE | a | d | SHAFT DIAMETER | GRAY | | BLACK | |
|---|-----|------|----------------|----------|----------|----------|----------|
| | | | | MATT | GLOSSY | MATT | GLOSSY |
| With line | 8.3 | - | 4 | 023-4315 | 023-4310 | 023-4325 | 023-4320 |
|  | 10 | 4.05 | 6 | 023-4415 | 023-4410 | 023-4425 | 023-4420 |
| | 10 | 3.2 | 1/4" | 023-4515 | 023-4510 | 023-4525 | 023-4520 |

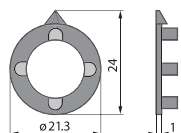
Packaging size: 100 pieces



CAP

| TYPE | SURFACE | GRAY | BLACK | RED | BLUE | YELLOW | GREEN |
|--------------|---------|----------|----------|----------|----------|----------|----------|
| Without line | Matt | 040-4015 | 040-4025 | 040-4035 | 040-4045 | 040-4055 | 040-4065 |
| | Glossy | 040-4010 | 040-4020 | 040-4030 | 040-4040 | 040-4050 | 040-4060 |
| With line | Matt | 040-4615 | 040-4625 | 040-4635 | 040-4645 | 040-4655 | 040-4665 |
| | Glossy | 040-4610 | 040-4620 | 040-4630 | 040-4640 | 040-4650 | 040-4660 |

Packaging size: 100 pieces



POINTER

| SURFACE | GRAY | BLACK | RED | BLUE | YELLOW | GREEN |
|---------|----------|----------|----------|----------|----------|----------|
| Matt | 041-4015 | 041-4025 | 041-4035 | 041-4045 | 041-4055 | 041-4065 |
| Glossy | 041-4010 | 041-4020 | 041-4030 | 041-4040 | 041-4050 | 041-4060 |

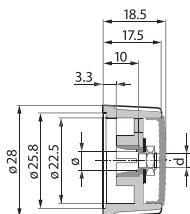
Packaging size: 100 pieces

Dimensions and ordering information



www.atd-elektronik.cz

SHAPE, DIMENSION AND PART NUMBER

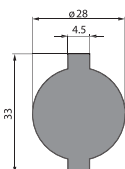
KNOB SIZE: Ø 28 MM




KNOB

| TYPE | d | SHAFT DIAMETER | GRAY | | BLACK | |
|---|------|----------------|----------|----------|----------|----------|
| | | | MATT | GLOSSY | MATT | GLOSSY |
| Without line  | 4.05 | 6 | 020-5415 | 020-5410 | 020-5425 | 020-5420 |
| | 3.2 | ¼" | 020-5515 | 020-5510 | 020-5525 | 020-5520 |
| With line  | 4.05 | 6 | 021-5415 | 021-5410 | 021-5425 | 021-5420 |
| | 3.2 | ¼" | 021-5515 | 021-5510 | 021-5525 | 021-5520 |

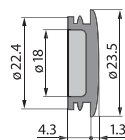
Packaging size: 100 pieces





WING KNOB

| TYPE | d | SHAFT DIAMETER | GRAY | | BLACK | |
|---|------|----------------|----------|----------|----------|----------|
| | | | MATT | GLOSSY | MATT | GLOSSY |
| With line  | 4.05 | 6 | 023-5415 | 023-5410 | 023-5425 | 023-5420 |
| | 3.2 | ¼" | 023-5515 | 023-5510 | 023-5525 | 023-5520 |

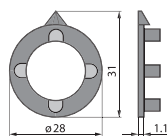
Packaging size: 100 pieces



CAP

| TYPE | SURFACE | GRAY | BLACK | RED | BLUE | YELLOW | GREEN |
|---|---------|----------|----------|----------|----------|----------|----------|
| Without line  | Matt | 040-5015 | 040-5025 | 040-5035 | 040-5045 | 040-5055 | 040-5065 |
| | Glossy | 040-5010 | 040-5020 | 040-5030 | 040-5040 | 040-5050 | 040-5060 |
| With line  | Matt | 040-5615 | 040-5625 | 040-5635 | 040-5645 | 040-5655 | 040-5665 |
| | Glossy | 040-5610 | 040-5620 | 040-5630 | 040-5640 | 040-5650 | 040-5660 |

Packaging size: 100 pieces



POINTER

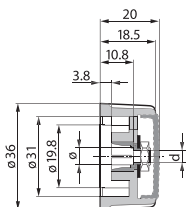
| SURFACE | GRAY | BLACK | RED | BLUE | YELLOW | GREEN |
|---------|----------|----------|----------|----------|----------|----------|
| Matt | 041-5015 | 041-5025 | 041-5035 | 041-5045 | 041-5055 | 041-5065 |
| Glossy | 041-5010 | 041-5020 | 041-5030 | 041-5040 | 041-5050 | 041-5060 |

Packaging size: 100 pieces



Dimensions and ordering information

SHAPE, DIMENSION AND PART NUMBER

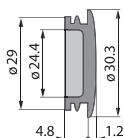
KNOB SIZE: Ø 36 MM





KNOB

| TYPE | d | SHAFT DIAMETER | GRAY | | BLACK | |
|---|------|----------------|----------|----------|----------|----------|
| | | | MATT | GLOSSY | MATT | GLOSSY |
| Without line  | 4.05 | 6 | 020-6415 | 020-6410 | 020-6425 | 020-6420 |
| | 3.2 | ¼" | 020-6515 | 020-6510 | 020-6525 | 020-6520 |
| With line  | 4.05 | 6 | 021-6415 | 021-6410 | 021-6425 | 021-6420 |
| | 3.2 | ¼" | 021-6515 | 021-6510 | 021-6525 | 021-6520 |

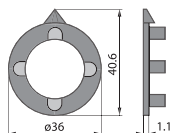
Packaging size: 100 pieces



CAP

| TYPE | | SURFACE | GRAY | BLACK | RED |
|---|--|---------|----------|----------|----------|
| Without line  | | Matt | 040-6015 | 040-6025 | 040-6035 |
| | | Glossy | 040-6010 | 040-6020 | 040-6030 |
| With line  | | Matt | 040-6615 | 040-6625 | 040-6635 |
| | | Glossy | 040-6610 | 040-6620 | 040-6630 |

Packaging size: 100 pieces



POINTER

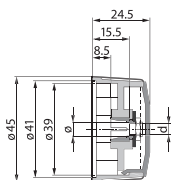
| SURFACE | GRAY | BLACK | RED |
|---------|----------|----------|----------|
| Matt | 041-6015 | 041-6025 | 041-6035 |
| Glossy | 041-6010 | 041-6020 | 041-6030 |

Packaging size: 100 pieces

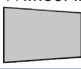

Dimensions and ordering information

SHAPE, DIMENSION AND PART NUMBER

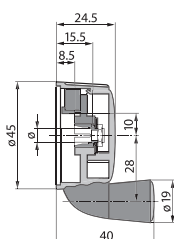
KNOB SIZE: Ø 45 MM



KNOB

| TYPE | d | SHAFT DIAMETER | GRAY GLOSSY | BLACK GLOSSY |
|---|------|----------------|-------------|--------------|
| Without line  | 4.05 | 6 | 020-7410 | 020-7420 |
| | 3.2 | ¼" | 020-7510 | 020-7520 |
| With line  | 4.05 | 6 | 021-7410 | 021-7420 |
| | 3.2 | ¼" | 021-7510 | 021-7520 |

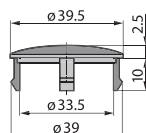
Packaging size: 50 pieces



CRANK KNOB

| TYPE | d | SHAFT DIAMETER | GRAY GLOSSY | BLACK GLOSSY |
|--|------|----------------|-------------|--------------|
|  | 4.05 | 6 | 020-8410 | 020-8420 |

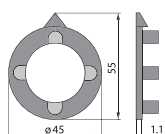
Packaging size: 40 pieces



CAP

| TYPE | SURFACE | GRAY | BLACK | RED |
|---|---------|----------|----------|----------|
| Without line  | Glossy | 040-8010 | 040-8020 | 040-8030 |

Packaging size: 100 pieces



POINTER

| TYPE | GRAY | BLACK | RED |
|--------|----------|----------|----------|
| Glossy | 041-7110 | 041-7120 | 041-7130 |

Packaging size: 100 pieces



Ordering information

ORDERING CODE

02 - - - - -

TYPE | LINE

- 0** Knob without line
- 1** Knob with line
- 2** Wing knob without line
- 3** Wing knob with line

SURFACE

- 0** Glossy
- 5** Matt

COLOR

- 1** Gray
- 2** Black

| KNOB SIZE | COLLET DIAMETER Ø | | | | | | COLLET WITH THROUGH DRILLING Ø | | | | | |
|-----------|-------------------|----|----|----|----|------|--------------------------------|-----|-----|------|------|-----|
| | 2 | 3 | 4 | 5 | 6 | 1/8" | 1/4" | 4 | 6 | 1/8" | 1/4" | |
| 9 mm | 10 | 11 | | | | 12 | | | | | | |
| 10 mm | 20 | 20 | 23 | | | 22 | | | | | | |
| 14.5 mm | 30 | 31 | 33 | 36 | 34 | 32 | 35 | | | 3 G | | |
| 21 mm | 40 | 41 | 43 | 46 | 44 | 42 | 45 | 4 E | 4 F | 4 G | 4 H | |
| 28 mm | | 51 | 53 | 56 | 54 | | 55 | 5 E | 5 F | 5 G | 5 H | |
| 36 mm | | | 63 | 66 | 64 | | 65 | 6 E | 6 F | | | 6 H |
| 45 mm | | | | | 74 | | 75 | | 7 F | | | 7 H |

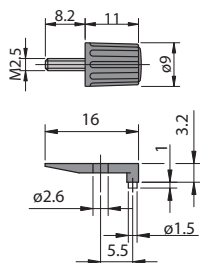
Explanation:

- Standard version
- Optional
- Not possible

Ordering information

ACCESSORIES AND SPARE PARTS

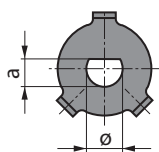
LOCKING SET

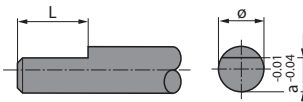


| LOCKING SET CONSISTING OF | GRAY | BLACK | CLEAR TRANSPARENT | CLEAR TRANSPARENT WITH LINE |
|---------------------------|----------|----------|-------------------|-----------------------------|
| Screw with knob | 026-2010 | 026-2020 | - | - |
| Locking piece | - | - | 026-2100 | 026-2200 |

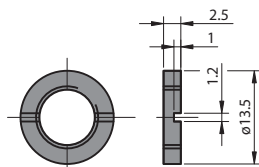
ANTI-SLIP BRACKET

D-shape prevents slipping on shaft and incorrect knob mounting. For knobs \varnothing 21, 28, 36 mm.



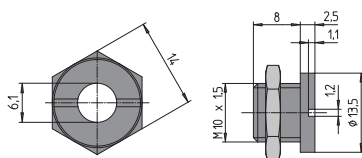
| ANTI-SLIP BRACKET CORRESPONDING TO D-SHAFT | \varnothing | a | L | PART NUMBER |
|--|---------------|--------|------|-------------|
|  | 6 mm | 4.6 mm | 9 mm | 048-2300 |

SLOTTED NUT (BRASS)



| THREAD | M6 X 0.75 | M7 X 0.75 | M8 X 0.75 | M10 X 0.75 | 3/8" - 32 |
|-------------|-----------|-----------|-----------|------------|-----------|
| Slotted nut | 046-1000 | 046-1500 | 046-2000 | 046-32000 | 046-4000 |

MOUNTING AID

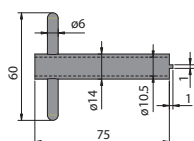


Mounting aid with through-hole \varnothing 6 mm

Part number 047-3000

MOUNTING TOOL

Tool for tightening of our slotted nuts and threaded bushings.



Mounting tool

Part number 048-1000

Specifications

MECHANICAL DATA

FASTENING AND OPERATING TORQUE

| KNOB DIAMETER Ø | COLLET DIAMETER Ø | | | | | | | | | |
|-----------------|-------------------|-----|------------|-----|------|-----|------|-----|------|-----|
| | 2 mm | | 3 mm, 1/8" | | 4 mm | | 6 mm | | 1/4" | |
| | a | b | a | b | a | b | a | b | a | b |
| | Ncm | Ncm | Ncm | Ncm | Ncm | Ncm | Ncm | Ncm | Ncm | Ncm |
| 9 mm | 50 | 25 | 50 | 25 | | | | | | |
| 10 mm | | | 80 | 40 | 80 | 60 | | | | |
| 14.5 mm | | | 100 | 50 | 100 | 80 | 120 | 140 | 120 | 140 |
| 21 to 45 mm | | | | | 100 | 80 | 160 | 140 | 120 | 140 |

a = max. admissible fastening torque for screws respective nuts

b = operating torque for stainless steel shafts with a tolerance of +0 / -0.018 mm for max. tightening torque

MATERIALS

Collets, sleeves, nuts: Brass
 Knobs: Polyamid

ENVIRONMENTAL DATA

Operating temperature: -40 to +70 °C
 Flammability: UL94-HB

©Copyright 2018 by Elma Electronic AG, CH-8620 Wetzikon. Subject to technical modifications, all data supplied without liability.

Please contact our sales team for more details.

China: +86 21 5866 5908
 France: +33 388 56 72 50

Germany: +49 7231 97 34 0
 Israel: +972 3 930 50 25

Singapore: +65 6479 8552
 Switzerland: +41 44 933 41 11

United Kingdom: +44 1234 838 822
 United States: +1 510 656 3400