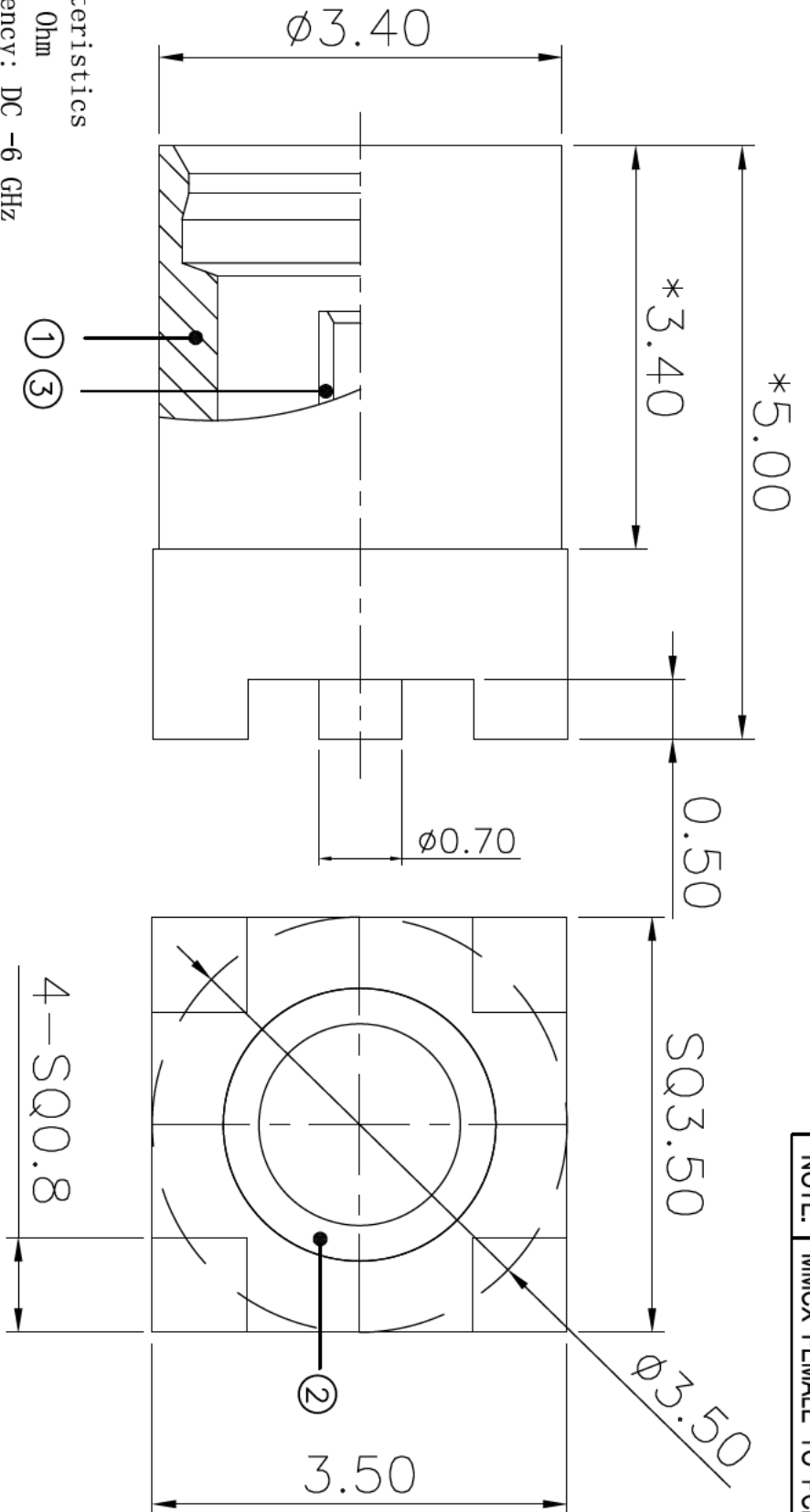


ROHS

NOTE: MMCX FEMALE TO PCB



1. Electrical Characteristics

- 1.1 Impedance: 50 Ohm
- 1.2 Working Frequency: DC -6 GHz
- 1.3 S.W.R.: ≤ 1.5
- 1.4 Working Voltage: 170V max
- 1.5 Insulation Resistance: 1000 MOhm
- 1.6 Contact Resistance:
 - Center Contact: 5 mOhm
 - Outer Contact: 2.5 mOhm

2. Environmental

- 2.1 Working Temperature Range:
 - 55 ° C ~ +125° C

3	be cu	gold	Projection 					TITLE	MMCX FEMALE SMD	UNITS	mm	SCALE	10:1			
2	PTFE							APPROVED	AUDIT	DRAWING	DESIGN	PART NO.	MMCX-5212s-TGG			
1	brass	gold								X.H.B	X.H.B	DRAWING NO.	MMCX-5212s-TGG			2022.08.04
	Material	Plated					GLAZE MATERIAL			SYE	DATE	REV.				