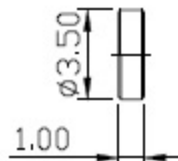


**MATERIAL :** BODY-BRASS  
 INSULATOR-TEFLON  
 CONTACT-BRASS  
 LOCK WASHER-BRASS  
 O-RING-SILICONE  
 SOLDER NUT-BRASS  
 SLEEVE-BRASS  
 NUT-BRASS  
**FINISH :** BODY-NICKEL PLATING  
 CONTACT-GOLD PLATING OVER NICKEL  
 LOCK WASHER-NICKEL PLATING  
 NUT-NICKEL PLATING  
 SLEEVE-NICKEL PLATING  
 SOLDER NUT-GOLD PLATING OVER NICKEL



DIMENSIONS ARE IN MILLIMETERS		TOLERANCE		<b>SCHMID-M</b>	
· ×	±0.5	ANGLE ±3°	SCALE	TITLE N Straight Bulkhead Jack for RG402/u	
· × ×	±0.1		REV	DRAWING NO N-7215-TGN	
· × × ×	±0.05		A-1	FILE NO	
DRAWN		DATE	99.05.06		
APPROVAL		DATE			