

The SE 8100 Series is Power Entry Module with Fuses



SE 8100



SE 8200



### Description :

- The SE 8100 power entry module combines an IEC inlet, mains filter with excellent filter attenuation and fuses in a small form factor.
- Exceptional conducted attenuation performance, based on chokes with high saturation resistance and excellent thermal behavior.
- Rated currents up to 10A
- For one or two fuses
- High performance-to-price ratio
- Optional medical versions (B type)
- Custom-specific versions are available on request.

### Typical Applications :

- Small to medium-sized machines and household equipment
- Portable electrical and electronic equipment
- Single-phase power supplies, switch-mode power supplies
- Test and measurement equipment
- Medical equipment

### Electrical Schematic :

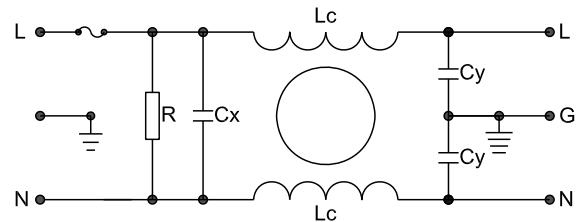


Fig 1

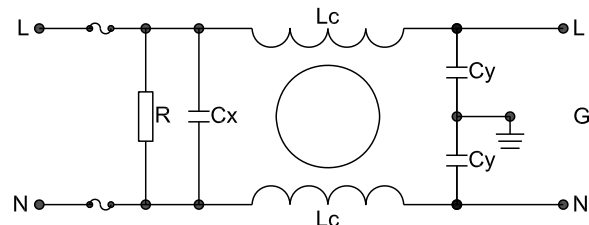


Fig 2

### Specification :

Rated Voltage:	120/250VAC
Rated Current:	1A~10A
Operating Frequency:	50/60Hz
Temperature range:	HPF 25/085/21
Test Voltage ( 1min ):	
Line to Ground:	2000VAC
Line to Line:	1450VDC

### Filter Selection Table :

Filter	Rated current (A)	Rated voltage (V)	Leakage Current (mA)	Input/Output connections	Electrical Schematic	Dimension
SE8100-1-01	1	120/250	0.5	01	1	1
SE8100-3-01	3	120/250	0.5	01	1	1
SE8100-6-01	6	120/250	0.5	01	1	1
SE8100-10-01	10	120/250	0.5	01	1	1
SE8200-1-01	1	120/250	0.5	01	2	2
SE8200-3-01	3	120/250	0.5	01	2	2
SE8200-6-01	6	120/250	0.5	01	2	2
SE8200-10-01	10	120/250	0.5	01	2	2

### Mechanical Dimension:

(Unit:mm)

All dimensions in mm; 1 inch=25.4mm

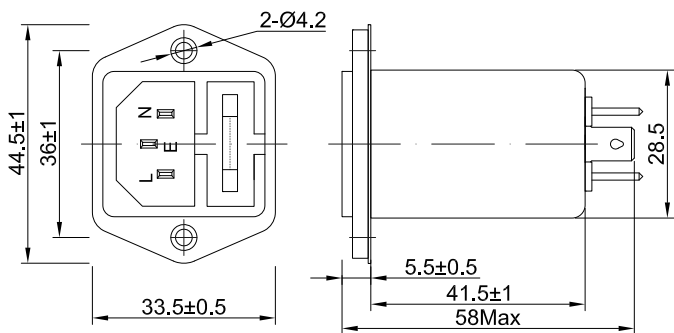


Fig 1

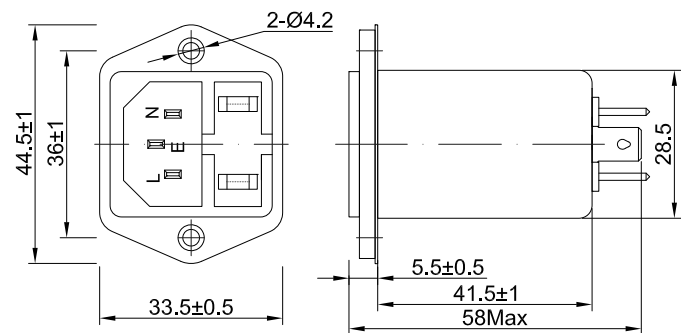
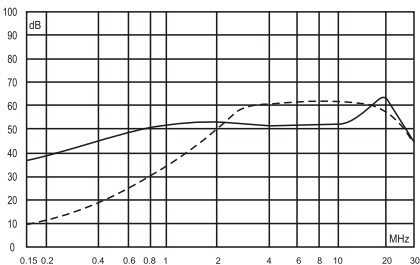


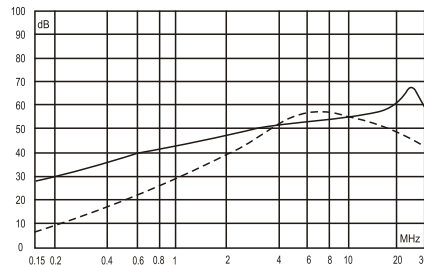
Fig 2

### Insertion Loss in dB:

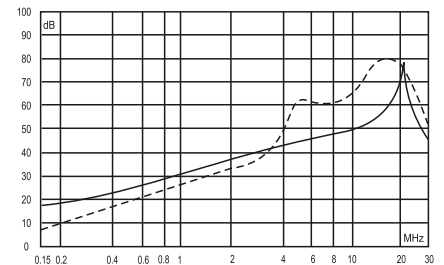
(Measured in 50Ω system , as IEC/CISPR NO.17)



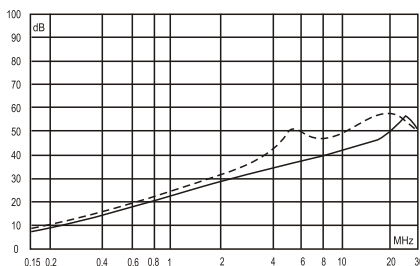
1A



3A



6A



10A

----- Differential Mode  
 ——— Common Mode