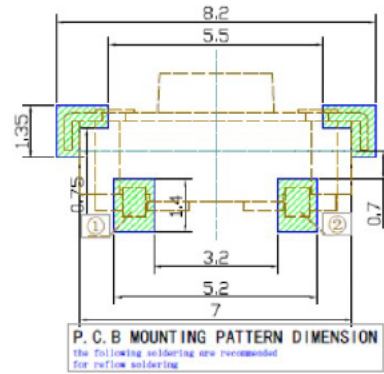
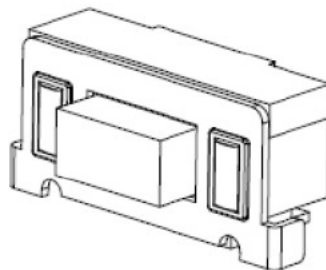
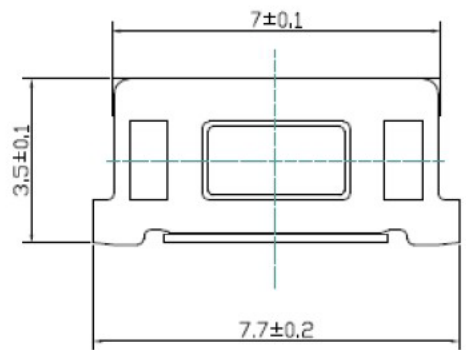
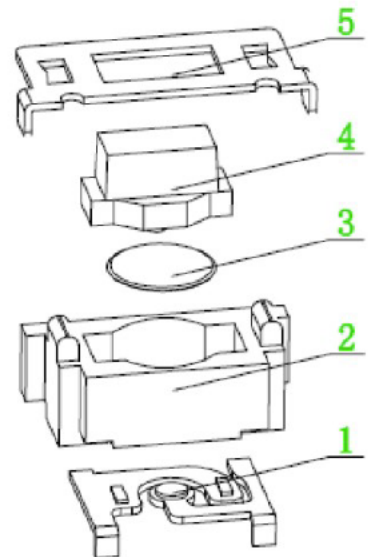
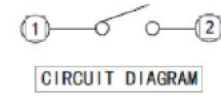
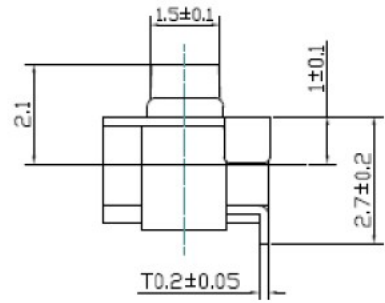
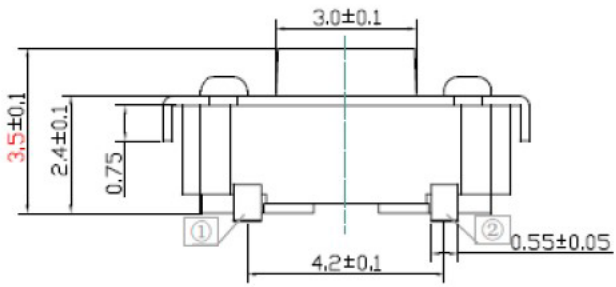


1 2 3 4 5 6 7 8

|     |          |
|-----|----------|
| 5   | H65      |
| 4   | LCP      |
| 3   | SUS301   |
| 2   | LCP      |
| 1   | H65      |
| NO. | Material |



|                        |                   |
|------------------------|-------------------|
| Rated Current:         | 50mA MAX          |
| Rated voltage:         | DC 12V            |
| Contact resistance:    | ≤100mΩ            |
| Insulation Resistance: | ≥100MΩ            |
| Compresslve strength:  | AC250V 50Hz/1 mln |
| Operating force:       | 160±30gf          |
| Mechanical llife:      | 100,000 cycles    |
| Operation Stroke:      | 0.25±0.1mm        |
| Temperature Range:     | -40°C ~ +85°C     |

|             |               |
|-------------|---------------|
| TOLERANCE   |               |
| SCALE       | UNIT mm       |
| DRAW Walter | DATE 7.2.2023 |
| CHECK Barn  | REV           |

|                                    |  |
|------------------------------------|--|
| <b>SCHMID-M</b>                    |  |
| TITLE<br><b>SM TS3635B-180AH 2</b> |  |
| DESCRIPTION<br>SMD Tact switch     |  |



1 2 3 4 5 6 7 8