

*Change new drawing frame in Blue Color since 2009/07/01, to comply with Company CIS Policy.

Revisions

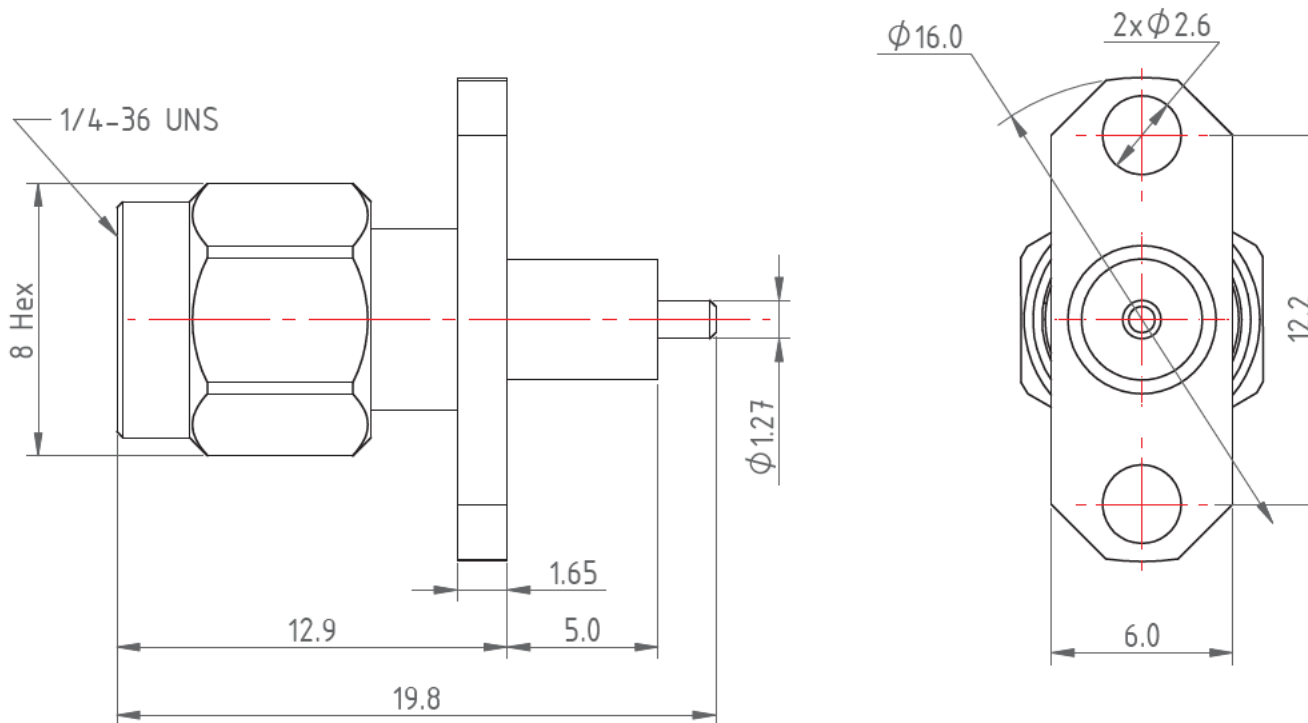
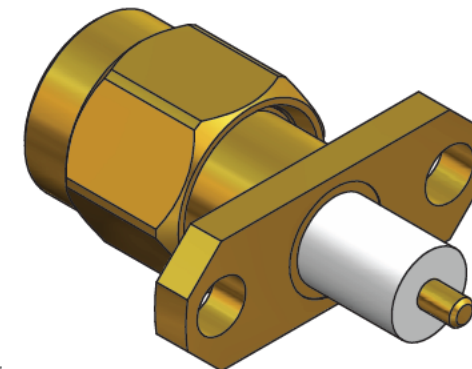
"Note: Revisions B; B-1; B-2..... On Behalf of Official Drawing.
Revisions 1; 2; 3; 4..... On Behalf of Experiment's Drawing."

ISS	Symbol	Description	Date
B	△	Formal Drawing Released	2017/08/09

Notes :

- Any Electrical, Mechanical or Environmental Test Per MIL-PRF-39012F Should be Spotlighted, as We May Not Have All Testing Equipment to Cover All of It.
- All Metal Materials Are in Compliance with RoHS 2 Directive 2011/65/EU Annex III Section 6 Paragraph.

Outline Drawing



Electrical :

Impedance : 50 Ω
 Frequency Range : 0-18 GHz.
 Voltage Rating : 500 V rms. (depending on cable)
 Insulator Resistance : ≥ 5 GΩ
 Dielectric Withstanding Voltage : 1000 V rms .
 Contact Resistance : Center Contact ≤ 3 mΩ
 Outer Contact ≤ 2.5 mΩ .

Mechanical :

Mating : 1/4-36 UNS Screw-on Coupling.
 Recommended Mating Torque : 7.1-9.7 lbs
 Coupling Nut Retention Force : ≥ 60.7 lbs

Environmental :

Temperature Range : -65°C to 165°C
 Corrosion (Salt Spray) : MIL-STD-202, Method 101, Cond. B
 Thermal Shock : MIL-STD-202, Method 107, Cond. B
 Mechanical : MIL-STD-202, Method 213, Cond. 1
 Vibration : MIL-STD-202, Method 204, Cond. D

Finish :

- [Unit of Plating Thickness Is in Micro Inch(μ)]
- Copper Strike Plating Thk. : 20 μ" min. (Under Plating)
 - Nickel Plating Thk. : 120 μ" min. (Over Finish 1)
 - Gold Plating Thk. : 30 μ" min. (Over Finish 2)
 - Gold Plating Thk. : 2 μ" max. (Over Finish 2)

4	Inner Contact	Brass	Finish 1/2/3		
3	Insulator	PTFE	None		
2	Body	Brass	Finish 1/2/4		
1	Shell	Brass	Finish 1/2/4		
ITEM	Description	Material	Finish	Part Number	QTY

*RoHS and REACH are fully complied to create a greener planet for future generations.

Scale	Abbr.	Date	Rev		DWG.NO.
NTS	ST	2017/8/9	B		
Tolerances : .X ±0.2 .XX ±0.1 .XXX ±0.05 Angular : ±1°				All Dimensions in mm [Inch] (Unless Otherwise Specified)	Customer P/N:
Drawn	Checked	Approved			Title
Mark	Mark	Thomas			SMA P/M-2 Hole Plug, Receptacle (Extended PTFE)
2017/8/9	2017/8/9	2017/8/9			

