

### PRODUCT IDENTIFICATION

**SMLF**    **5026**  
 |            |  
**Type**    **Size**

### FEATURES

- ◆ Dataline Noise Filter is a hinged-clamp high performance for EMI
- ◆ Internal dimensions from 1.9mm to 35mm radius
- ◆ Precision formed smooth surfaces prevent damage to wire insulation
- ◆ Customization available



### APPLICATIONS

- ◆ Internal and external power cables
- ◆ Computer peripherals
- ◆ Digital TV, TV monitor and printers

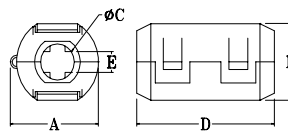


Fig 1

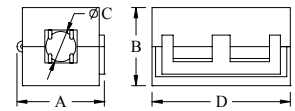


Fig 2

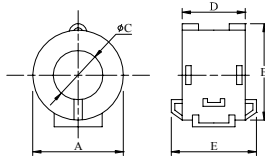


Fig 3

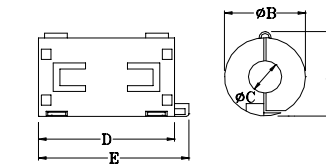


Fig 4

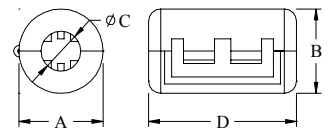


Fig 5

No.	Part No.	Impedance ( $\Omega$ )		Size (mm)					Fig
		25MHz	100MHz	A	B	C	D	E	
1	SMLF 0526	60	100	13±1	11.8±1	5±0.5	25.5±1	2.5±1	1
2	SMLF 0935	80	130	19.5±1	18±1	9±0.5	35±1	5.5±1	1
3	SMLF 1336	70	120	23.5±1	22.5±1	13±0.5	36±1	8.5±1	1
4	SMLF 0730	80	135	17±1	15±1	7±0.5	30±1	2.5±1	1
5	SMLF 0523	70	120	15±1	14±1	5.2±0.5	23±1		2
6	SMLF 65	120	200	20.5±1	20±1	6.5±0.5	33±1		2
7	SMLF 100	80	130	25.5±1	23.5±1	10±0.5	33±1		2
8	SMLF 130	105	170	31.5±1	30±1	13±0.5	33±1		2
9	SMLF 0817	35	85	19.5±1	23±1	8.1±0.5	17±1	23±1	3
10	SMLF 0820	50	110	19.5±1	23±1	8.1±0.5	20±1	26±1	3
11	SMLF 1014	35	75	24.5±1	28.5±1	10.2±0.5	13.5±1	20±1	3
12	SMLF 120	50	100	28±1	32±1	11.5±0.5	18±1	24±1	3
13	SMLF 150	30	70	29±1	33±1	15±0.5	15.5±1	21.5±1	3
14	SMLF 0718	40	75	15.5±1	14±1	7±0.5	18±1	22±1	4
15	SMLF 80	80	120	20.5±1	19.5±1	9±0.5	31.5±1	35.5±1	4
16	SMLF 1132	60	110	20.5±1	21±1	11±0.5	32±1	36±1	4
17	SMLF 1334	80	130	31.5±1	30.5±1	13±0.5	34±1	39.5±1	4
18	SMLF 35	55	95	15±1	15±1	4±0.5	25.2±1		5
19	SMLF 50	70	120	16.5±1	16.5±1	5.2±0.5	29.5±1		5
20	SMLF 75	90	150	21±1	21±1	7.5±0.5	39±1		5
21	SMLF 90	105	190	22.5±1	22.5±1	9.5±0.5	43±1		5